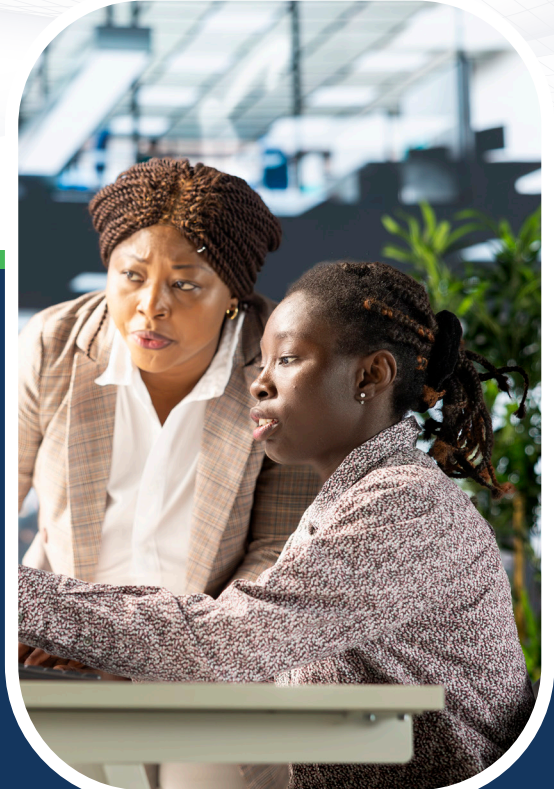




RFTSL

Research and Finance Technical Support Limited

COMPANY PROFILE 2026



Plot No. 260, Block D, Mbezi Beach
House No.1, Twiga Street, Opposite New Bagamoyo Road
+255 752 622 480 | P.O. Box 20360, Dar es Salaam, Tanzania

TABLE OF CONTENTS

Executive Summary	3
Company Overview	3
Vision, Mission & Core Values	4
About Us	5
Service portfolio	6
Research and development consulting	6
Agricultural and Socio-economic Research	7
Agricultural Research	7
Social economic research	7
Business System Analysis and Innovation Advisory	8
Business Training and Management Services	8
Strategic business training	8
General Management, audit, recruitment and training	9
Accounting Services	9
Tax Services	10
Industry Expertise / Sector Focus	11
Methodology / Approach	12
Team & Leadership	13
RFTSL Organisational Structure	16
Selected Projects / Case Studies	17
Projects	18
Case Studies (Proof of Work)	18
Clients & Partnerships	19
Impact / Achievements	19
Recognition of professional and other related bodies	19
RFTSL professional Registered and Regulated boards	19
Risk Management & Governance	20

Executive Summary

Research & Finance Technical Support Ltd (RFTSL) delivers research, finance and business consultancy services that support social and economic development. We combine academic rigour, practical experience, and local knowledge to provide high-quality research, climate and agricultural advisory services, financial and tax advisory services, and tailored capacity-building services to clients across the public, private, and non-profit sectors.

Core services: research and development consulting, climate change and resilience, agricultural and socio-economic research, business systems analysis and innovation, accounting and tax advisory, and capacity building.

Target markets: government agencies, NGOs and development partners, SMEs, academic institutions, agribusinesses, and private-sector actors across Tanzania and the East African region.

Company Overview

RFTSL is incorporated under the Companies Act (2002) in the United Republic of Tanzania, with **registration no. 184408678** dated 25 April 2025, and is limited by shares. We are a Tanzanian-owned professional services firm, founded by experienced practitioners who remain actively engaged in client service delivery.

Our multidisciplinary team brings over **20 years' combined experience** in research, project management, finance and advisory work. We are committed to integrity, quality, innovation and collaborative partnerships.





Vision

To be the most trusted partner in delivering innovative research, financial solutions and business consulting services that foster sustainable development and inclusive growth in Tanzania and beyond.



Mission

To empower clients with the knowledge, tools and strategies for success through innovative solutions, experienced professionals and a technology-driven approach.



Core Values

RFTSL's culture, decision and actions as the way to communicate what matters most to the company and people/clients; we believe in fundamental principles, "core values" of integrity, professionalism, quality (customer focused), innovation, excellence and collaboration (teamwork).

These values serve as a foundation for decision-making, goal-setting, and interaction with colleagues, customers, and the community at large.

The Research and Finance Technical Support Ltd (RFTSL) is a research and business consulting company duly incorporated under the Companies Act 2002.

RFTSL is a local enterprise founded by Tanzanians, comprising two Directors and five key technical staff. All Directors are professionals in their respective research and business specialities. The policy at RFTSL is that ownership of the firm must remain with professionals/experts who are active consultants, so that, individually and as a team, they can fully and wholeheartedly devote their time and energy to serving clients

RFTSL is supported by a multidisciplinary team of skilled professionals and technical experts committed to solving complex challenges and creating sustainable value for our partners and clients. We have built a strong reputation through consistent performance, integrity, and results-driven solutions.

RFTSL brings together over 20 years of combined industry experience. This collective expertise enables us to deliver the right solutions with accuracy, compliance, and strategic insight



Service Portfolio

Research and development consulting

Academic and Applied Research Services:

We assist in crafting strong, competitive funding proposals tailored to align with donors' priorities and criteria. We have extensive experience in shaping complex initiatives involving multiple stakeholders and partners. Our team also offers strategic guidance on donor engagement across various sectors. We provide consultancy, coaching, and mentoring programmes for stakeholders at all levels, working closely with local and international institutions to strengthen research capacity, improve project design and enhance delivery. We also deliver professional editorial and technical review services to refine proposals and manuscripts for submission. We also offer professional editorial and technical review services for academic manuscripts intended for publication in scholarly journals.

Climate Change, Resilience and Adaptation or Climate Finance:

Our Company provides consultancy services in climate change and environmental sustainability, including climate financing strategy development. We offer support for developing project proposals for climate adaptation and mitigation funding, carbon credit mechanisms, and monitoring, evaluation, and learning for climate projects. We also offer services on climate change and policy advice for governments, institutions, and community-based organisations.



Service Portfolio..

Agricultural and Socio-economic Research

Agricultural Research

Our Company recognises that agriculture is the backbone of most African economies and a source of livelihoods for many. Our Company has experienced experts in crops, livestock, aquaculture and forestry who are committed to undertaking studies on natural resources and to making investments in sustainable agriculture through good agronomic practices (GAP), with consideration of human and food safety.

Social economic research

Our Company's experts have experience in socio-economic activities, including economic analysis and social impact assessments. They are highly committed to providing consulting services in economic development, based on result-oriented measures of social indicators' performance



Service Portfolio...

Business System Analysis and Innovation Advisory

Our Company undertakes business analyses to identify current business needs and challenges and to provide advisory and strategic solutions. We support companies, including SMEs, in developing strategic plans and in implementing, monitoring, evaluating and learning, while ensuring the effective and efficient use of funds and addressing business challenges, all while maintaining compliance and managing risk.

Business Training and Management Services

Strategic business training

Our team provides tailored training services for SMEs to build an entrepreneurial mindset and support them in developing bankable business ideas and implementing successful strategies. This includes market analysis, business model development, competitive positioning and operational improvements trainings



Service Portfolio....

General Management, Accountancy, Recruitment and Training

We provide professional training tailored to clients' unique needs. The training programmes are designed to equip clients' teams with practical skills that can be applied immediately and deliver the desired outcome.

We also provide administrative and operational support, including team management, administrative tasks, and budgetary and financial services.

Accounting Services

We provide accounting and business Registration services, allowing businesses to focus on their core capabilities while we handle non-core functions. RFTSL Accounting and financial advisory services also cover financial reporting advisory, financial statement preparation, Cash flow management advisory, Financial due diligence, corporate finance advisory, Debt restructuring and Business valuation services.

RFTSL provide payroll software consulting, accounting technology solutions, and QuickBooks consulting and accounting services We manage clients' operations through the following accounting services: -

- Managing the entire Accounting / Finance Department
- Managing the payroll function
- Preparation of financial statements
- Regulatory fillings and
- Business Registration services



Service portfolio

Tax Services

We provide comprehensive tax services in Tanzania for both multinationals and local companies. We help them manage their tax risks and reduce their tax exposure.

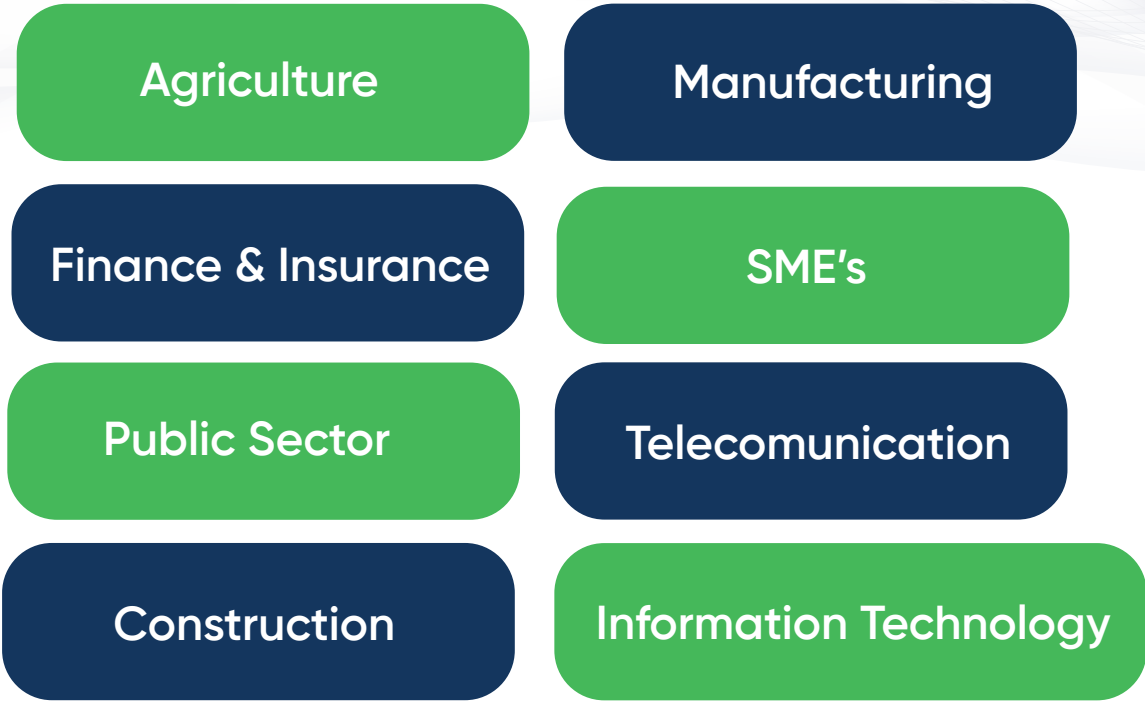
The practice comprises tax and legal professionals with experience in a range of tax services. These include tax planning and advisory, tax compliance, and transfer pricing. We also provide tax training and support businesses in setting up in Tanzania. Our tax services span several sectors, including manufacturing, construction, telecommunications, mining, energy, agriculture, trade, the public sector, international projects, and non-governmental organisations.

RFTSL is among the top tax consultants in Tanzania, providing corporate tax advisory services, tax compliance services, VAT advisory services, tax filing services, and income tax consultancy. We are available to provide these tax services in Tanzania



Industry Expertise / Sector Focus

RFTSL is expertise in the below highlighted specific sectors:



Methodology

RFTSL's methodology integrates robust research frameworks with practical, participatory data collection and sound analytical tools. Quality assurance is embedded through peer review, pilot testing and transparent reporting standards.

Research Design & Sampling

Rigorous design tailored to each client's context and objectives

Quantitative & Qualitative Analysis

Sound analytical tools for data-driven, evidence-based conclusions

Mixed-Methods Data Collection

Combining quantitative and qualitative approaches for comprehensive insights

Client-Tailored Knowledge Products

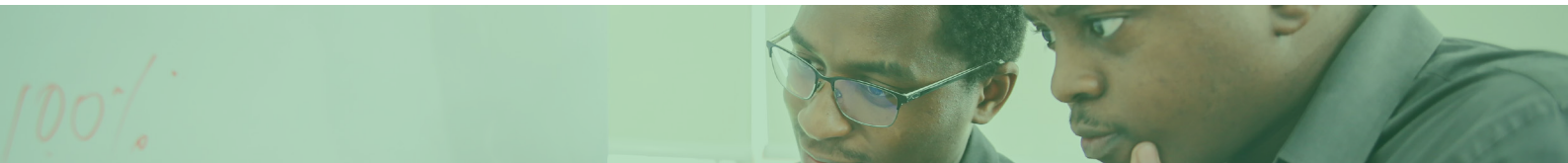
Accessible reports, briefs and presentations adapted to each audience

Stakeholder Engagement

Participatory processes ensuring community and client voices are

Quality Assurance

Peer review, pilot testing and transparent reporting standards at every stage



Team & Leadership

RFTSL is led by experienced professionals with strong track records in research, finance and development. Below are the core team members and short bios



Hagai Maleko
Co-Founder | Managing Director

Mr. Hagai is a Certified Public Accountant (CPA-T) and a registered Associate Certified Public Accountant (ACPA) with the Tanzanian National Board of Accountants and Auditors (NBAA). He holds a Bachelor of Commerce (Accounting) from the University of Dar es Salaam and has over 20 years' experience in financial management, accounting and project finance and management. Hagai has worked with organisations such as World Vision Tanzania, the Danish Volunteer Service (MS Tanzania), and Private Agriculture Sector support (PASS Trust), serving in senior finance roles across development and private-sector programmes.

His expertise includes internal controls, donor-funded project accounting, financial systems implementation and capacity building.



Dr. Emma Minja
Co – Founder | Director Of Research & Consultancy Services

Dr Emma is a researcher and consultant with extensive experience in development research, policy analysis, and applied consultancy across Eastern Africa. She leads RFTSL's research portfolio, overseeing project design, implementation, and quality assurance to ensure rigorous methodologies and high-quality knowledge products for clients.

Her expertise spans rural development, infrastructure and water governance, and socio-economic transformation, underpinned by strong interdisciplinary training in development studies. Dr Emma has worked with national and international research programmes, led mixed-methods field studies, and contributed to policy-relevant analysis, academic publications, and capacity-building initiatives. She holds a PhD from the University of Bonn, Germany.

Team & Leadership



Dr. Anasia Gasper Maleko

Associate Researcher
and Consultant

Dr Anasia is an Agricultural Economist and Development Consultant with over two decades of experience in agribusiness, trade, and socio-economic development across Africa and beyond. She holds a PhD in Agricultural Economics and Food Marketing from the University of Reading, UK.

She has led high-level assignments for international organisations, governments, and private-sector partners, delivering expertise in agricultural value-chain development, climate resilience, trade facilitation under the AfCFTA, and SME growth. With strong skills in research, policy analysis, and monitoring and evaluation, Dr Anasia combines academic rigour with practical solutions to support inclusive, competitive, and sustainable development



Dr. Valentine Opanga

Associate Researcher
and Consultant

Dr Valentine is an environmental policy analyst with experience in climate policy, land governance and sustainable development, and multi-sectoral consulting across Africa and Europe. She holds a PhD in Environmental Governance from the University of Bonn, Germany. Dr Valentine has overseen projects addressing plastic pollution, urban greening initiatives, and women's economic empowerment for esteemed organisations, including the World Bank, Oxfam, and IGAD.

Her expertise encompasses research, stakeholder engagement, programme management, and policy analysis, enabling innovative solutions in both academic and applied research contexts, as well as in Monitoring, Evaluation, Accountability, and Learning (MEAL)

Team & Leadership

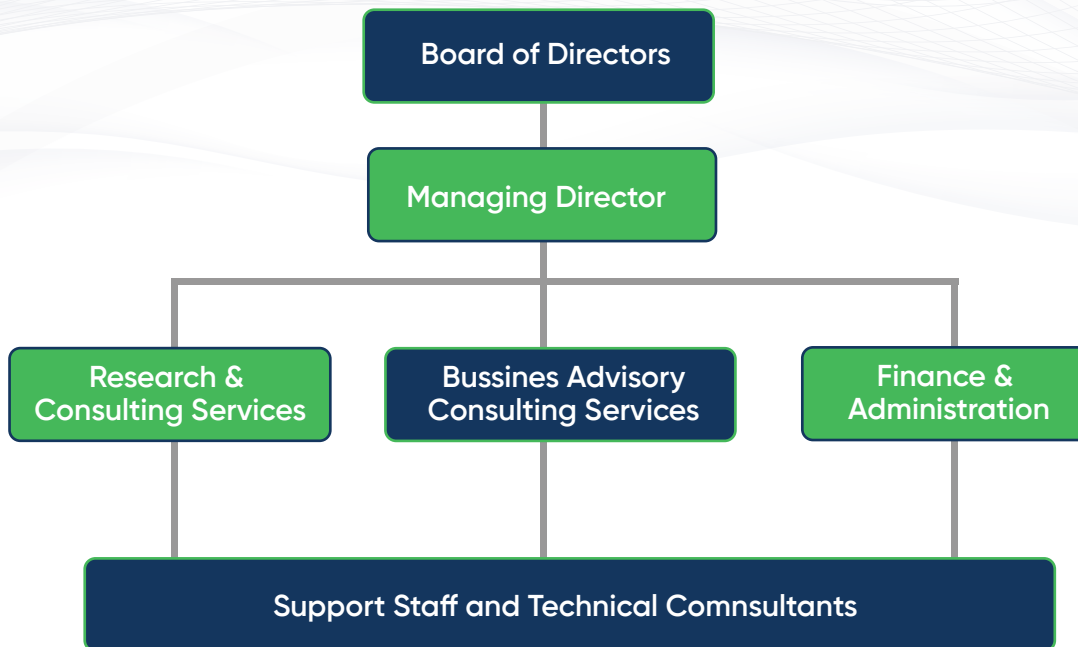


Emmanuel Somboi Business Consultant

Mr. Emmanuel is a Certified Public Accountant (CPA-T) with a background in audit, financial accounting and project finance. He holds a bachelor's degree in Accounting & Finance and has experience at Ernst & Young, Serengeti Breweries and several private-sector clients across financial services, oil and gas, hospitality, telecommunications, agriculture, manufacturing and insurance. He has led more than ten (10) audit assignments, including M&P Exploration Production Ltd, Milcom Tanzania Plc (TIGO), Zanzibar Telecom Plc (ZANTEL), Tanzania Cigarette Plc (TCC), Standard Chartered Tanzania, Tanzania Reinsurance Company Ltd (TAN-RE) and Ceylex Engineering (PVT) Ltd. He has also audited more than 20 clients, including the National Social Security Fund, Management Development for Health (MDA), World Vision Tanzania (WVT), Tanzania Forest Conservation Group (TFCG) and Tanzania Telecommunication Corporation (TTCL).



RFTSL Organisation Structure



Selected Projects / Case Studies

With decades of experience in academic research, agricultural transformation, climate resilience, business advisory, and financial consulting, we provide customised solutions that help businesses, institutions, students, and communities to thrive.

Projects

- Policy Research & Evaluation – youth in agribusiness, women empowerment, trade impact
- Data analysis tools, designs and monitoring frameworks
- Proposal development for Grants application and Professional reviews
- Capacity Building & Mentorship – women entrepreneurs, students and youth
- Success in GenFarm CO₂ neutrality and the PACT EAC climate-trade programme
- Thought leadership in agricultural transformation across Sub-Saharan Africa
- Private sector advisory with governments, regional blocs, and local and international partners

Case Studies (Proof of Work)

With decades of experience in academic research, agricultural transformation, climate resilience, business advisory, and financial consulting, we provide customised solutions that help businesses, institutions, students, and communities to thrive.

Sector	Project Title	Client / Partner
Agriculture	Boosting Sunflower Competitiveness in Tanzania	Regional Commissioner's Office, Dodoma
Climate	Scaling CO ₂ Neutral Farming in Rwanda & East Africa	GenFarm Project
Business	Developing Seaweed Export Strategy for Zanzibar SMEs	Talanta International
Socio-economic	Youth in Policy & Agri-entrepreneurship	Uchumi Institute
Finance	National Investment Promotion Strategy	DAIMA Associates

Clients & Partnerships

We partner with government agencies, research institutions, development organisations, private-sector firms and civil society. Client and partner names are provided on request and with permission.

Impact / Achievements

Policy Impact

Research and evaluations that have directly informed government and institutional investment decisions

Capacity Building

Training and mentorship programmes strengthening the capabilities of SMEs, students and community organisations

Agriculture Transformation

Evidence-based interventions supporting sustainable agriculture and food security across East Africa

Recognition of professional and other related bodies

RFTSL professional staff are members and are registered and regulated by the following boards:

- National Body of Accountants and Auditors (NBAA)



Risk Management Governance

RFTSL's integrated risk management and governance framework provides a reliable foundation for successful project execution. By combining structured methodologies with practical experience, we ensure that risks are not only managed but transformed into opportunities for efficiency and improvement.

Internal Control

Clear policies and procedures; segregation of duties to prevent conflicts of interest; monitoring and reporting of internal control effectiveness; regular audits and reviews to ensure compliance.

Ethical Policies

Codes of conduct outlining expected behaviour; whistleblower protection; anti-bribery and corruption policies; training and awareness programmes.



Risk Assessment Frameworks

Identifying risks (threats and opportunities); analysing and prioritising risks by likelihood and impact; developing mitigation strategies and controls; monitoring and reporting risk status.

Effective Government

Board oversight and accountability; clear roles and responsibilities; transparency and disclosure; continuous improvement of governance frameworks.



Our commitment is anchored in delivering reliable, high-quality, and results-driven solutions that create measurable value for our clients.



RFTSL

Research and Finance Technical Support Limited

*“Empowering Sustainable Development through Research,
Finance and Innovative Business Solutions”*

Plot No. 260, Block D, Mbezi Beach
House No.1, Twiga Street, Opposite New Bagamoyo Road
+255 752 622 480 | P.O. Box 20360, Dar es Salaam, Tanzania
www.rftsl.co.tz | rftsl@rftsl.co.tz

